

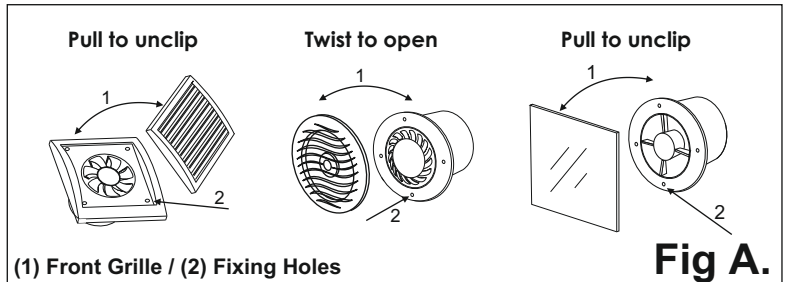
INSTALLATION INSTRUCTIONS FOR THE 90mm 3.5", 100mm 4" and LOW VOLTAGE EXTRACTOR FANS

NOTE

Switch off mains supply before making any electrical connection or maintenance. If in any doubt contact a qualified electrician.

- I. For best results always install the fan in the furthest window wall or ceiling from the main air inlet point and at a high level. This will ensure maximum airflow of fresh air throughout the room.
- II. Always use our low voltage or In-line duct fans to ventilate a shower cubicle. The transformer of the low voltage fan must be sited out of reach of any person using the bath or shower.
- III. All wiring must comply with IEE Regulations. The power cable must be a minimum of 1mm sq in section.

1. Cut a hole in the wall to suit the fan and ducting Ø100mm/4"(MM100). If the fan is to be fixed in the ceiling ensure that the hole is between the joists.
2. Fit ducting flush to the plaster of the wall or ceiling. Unclip the front grill Fig A (1)
3. Hold the body of the fan against the wall or ceiling and mark the fixing holes Fig A (2) and the cable entry.
4. Bring the power cable into position. For correct connection refer to the wiring diagrams (Fig B, Fig C, Fig D, Fig E) for the different models.

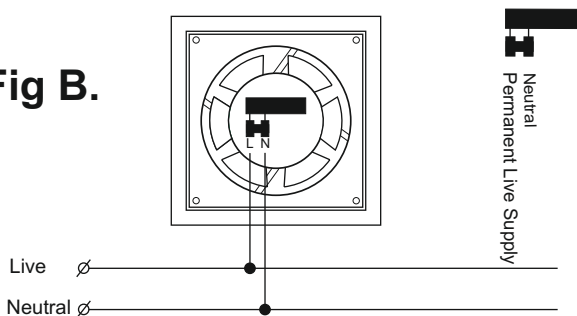


5. Use wall plugs and fixing screws to fix the fan to the wall or ceiling.

NOTE: If the fan is fitted with back shutter, make sure the shutter is in vertical position.

BASIC FAN, LIGHT RELAY AND TIMER

Fig B.

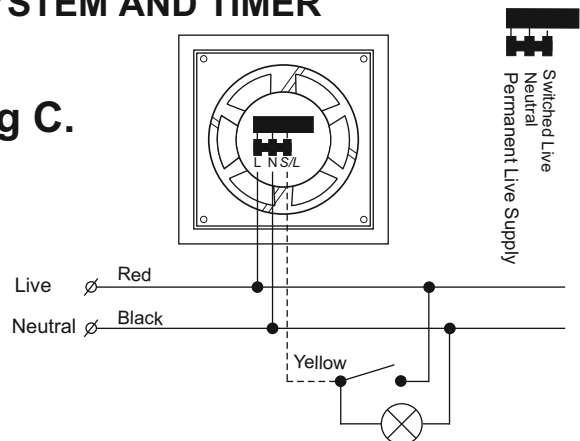


Standard The fan is connected to the light switch or to a separate pull-cord switch and will operate from the pull-cord switch or when the light is switched on.

Light Relay and Timer: Live: Black / Neutral: White
The fan will operate when the room is lit and the built-in timer ensures operation for 5 minutes after the light is switched off.

WITH TIMER; HUMIDITY CONTROL SYSTEM AND TIMER

Fig C.



With Timer The fan is connected to the light switch and will operate when the light switch is switched on or from a separate pull-cord switch. The built-in timer will ensure operation for 5 minutes after the light is switched off.

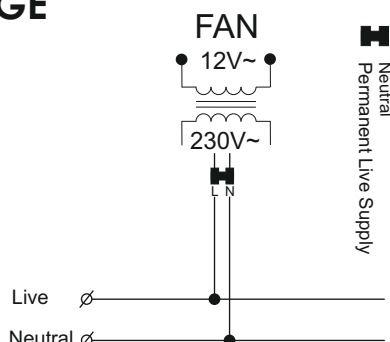
With Humidity Control System and Timer

a) The fan will operate when the light switch is switched on. The timer ensures operation for 5 minutes after the light is switched off and the humidity is below 70%.

b) The fan will operate when the humidity in the premises reaches over 70%. The built-in timer will ensure operation for 5 min. after the humidity is reduced below 70%.

LOW VOLTAGE BASIC FAN

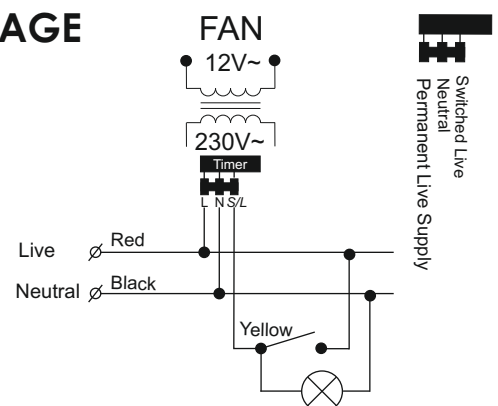
Fig D.



Note:
The transformer must be sited out of reach of any person using the bath or shower.

LOW VOLTAGE TIMER FAN

Fig E.



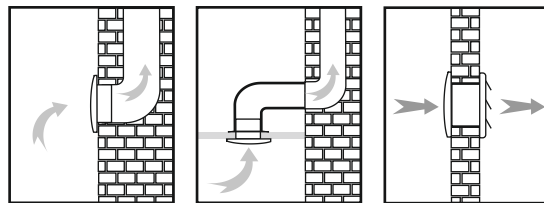
Note:
The transformer must be sited out of reach of any person using the bath or shower.

IMPORTANT

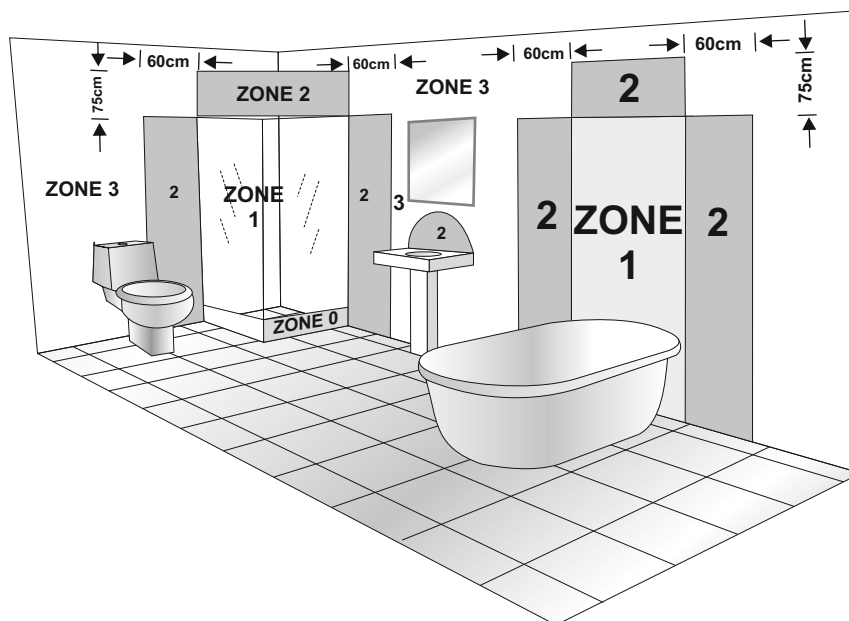
- Switch off mains supply before making any electrical connections or maintenance. If in any doubt contact a qualified electrician.
- The appliance is not intended for use by children or persons with reduced physical, sensory or mental capabilities without being given supervision.
- Precautions must be taken to avoid back-flow of gases into the room from the open flue or other open-fire appliances.

Technical data

Type	Hz/V	min ⁻¹	m ³ /h	W	IP	Max Air Temp.	Noise Level	Bathroom Zones
MMP90	50/230	2400	85	13	24	40°C	26	2, 3
MMP100	50/230	2430	105	13	24	40°C	29	2, 3
MMP-UE	50/230	2200	85	5,5	24	40°C	25	2, 3
MM90	50/230	2400	85	13	24	40°C	26	2, 3
MM100	50/230	2430	105	13	24	40°C	29	2, 3
MM100 UE	50/230	2200	85	5,3	24	40°C	25	2, 3
MM100 LV	50/12	2430	105	13	24	40°C	29	1, 2, 3
MM100/90UE	50/230	2500	90	6	24	40°C	23	2, 3



Bathroom Zone Regulations



WARRANTY

Your MMotors domestic fan comes with a free 60 months manufacturer's warranty.

MMotors extractor fans are manufactured to conform to the highest European standards, and we are confident that they are totally reliable. However, in the unlikely event a fault may occur, they have 60 months warranty which covers you for manufacturing faults or parts failure.

Guarantee Document:

Product.....
Type.....
Date of purchase.....

Purchaser.....

Sales person.....



ISO 9001:2015

Factory: MMOTORS
3 Malak Iskar str.
Etropole-Bulgaria

E-mail: mmotors@mmotors.bg
www.mmotors-europe.com